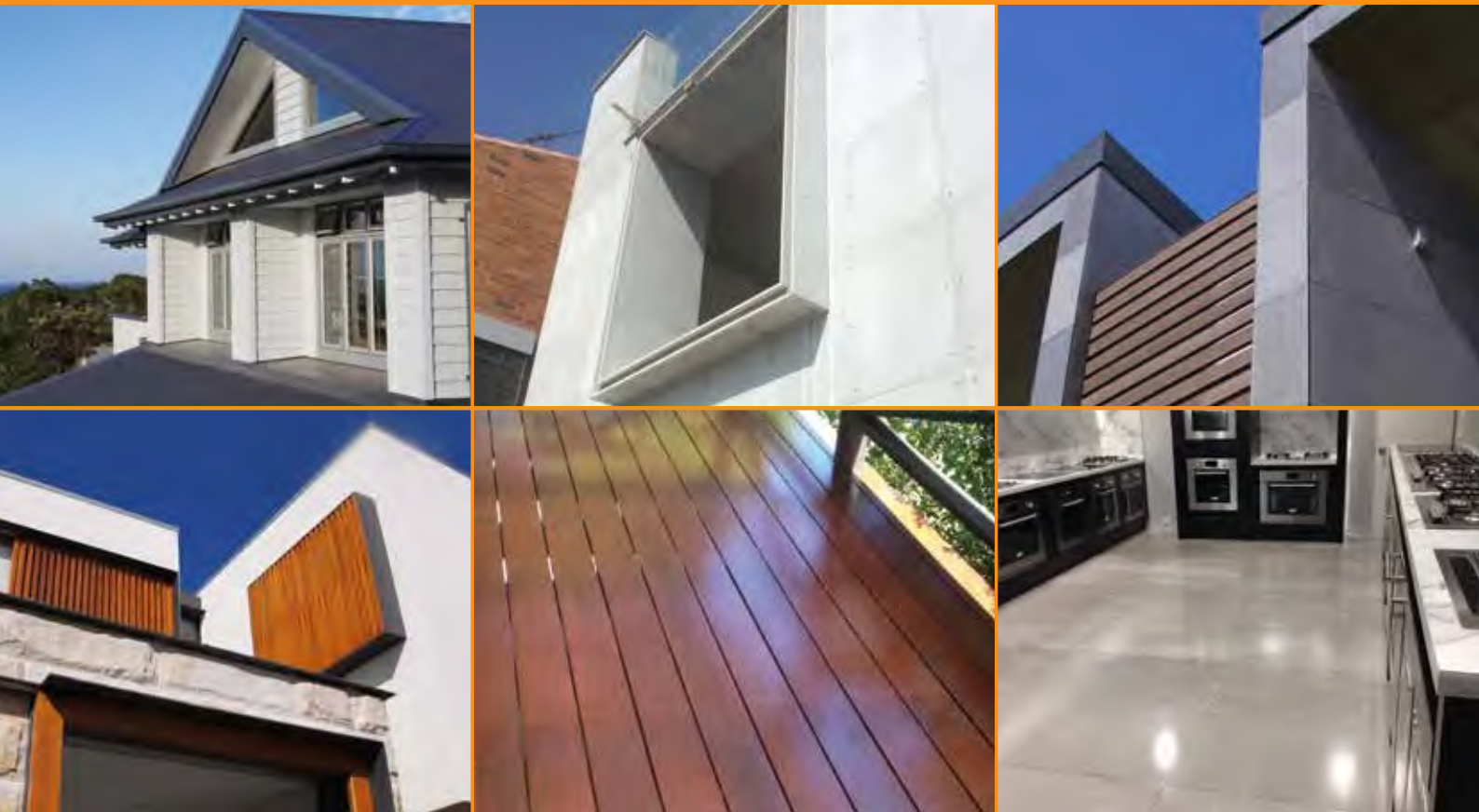


INEX > BOARDS™

ANY BUILDING • ANY SURFACE • ANYWHERE

PRODUCT RANGE





UBIQ is the provider of lightweight sheets for the construction industry. Critically, our products are both low carbon and high performing. For almost a decade UBIQ has been developing the Technology of Low Carbon Fibre Reinforced Engineered Cementitious Composite (ECC) for its application in our range of **INEX>BOARDS** for the construction industry.

UBIQ's innovative technology has been developed in Australia with the aim of producing a 'world's best' building board. This aim is now complete.

- **ANY BUILDING**
- **ANY SURFACE**
- **ANYWHERE**

www.ubiq.com.au

Low Carbon

UBIQ's **INEX>BOARDS** minimise harm to the planet in their production which is undertaken at room temperature. The embodied energy of our board is about 40% to that of comparable fibre cement boards.

Strength

UBIQ's **INEX>BOARDS** can be manufactured to a bending strength of up to 44MPa. The equilibrium bending strength of our flooring product is 22MPa.

Durability

Our boards can be used in all climatic conditions – rain, snow, frost, varying humidities and extreme temperatures.

Stability

Our tests demonstrate that **INEX>BOARDS** can retain over 80% of the dry strength after 25 soak-dry cycles.

Fire Resistance

Our tests demonstrate that **INEX>BOARDS** are non-combustible, BAL-FZ and FRL 60/60/60 rated. Performance data available on application to UBIQ or at www.ubiq.com.au.

Acoustic Resistance

Our tests demonstrate an acoustic attenuation of Rw5 higher than that of standard plasterboard products. At 10mm thickness our boards provide a similar attenuation as 13mm thick sound rated plasterboard.

Impact Resistance

INEX>BOARDS offer incredibly high impact resistance – greater than that of traditional compressed fibre cement sheets or impact resistant plasterboards currently on the market.

Water Resistance

Our boards have a high level of water resistance and conform to the requirements of the Water Permeability Test.

Radiation Shielding

Our tests show enhanced electromagnetic radiation shielding properties.

Healthier Living

UBIQ's **INEX>BOARDS** promote healthier living. They do not contain asbestos, are non-toxic, provide enhanced breathability and do not support the growth of mould.

All of the above are just some of the benefits of our **INEX>BOARDS**. It is exciting that all of these improved performance credentials can be found in one low carbon product – in a range of building boards for all surfaces, internal, external; walls, ceilings or floors.

INEX>FLOOR™

INEX>FLOOR is a high strength lightweight flooring substrate with tongue and groove (T&G) edges. It can be used for external or internal applications; as a substrate for most finishes such as tiles, vinyl, carpet or timber.

INEX>FLOOR can be used in conjunction with floor systems to achieve up to BAL-FZ bushfire compliance.

INEX>FLOOR is simplicity itself. A single affordable product for multiple flooring applications.

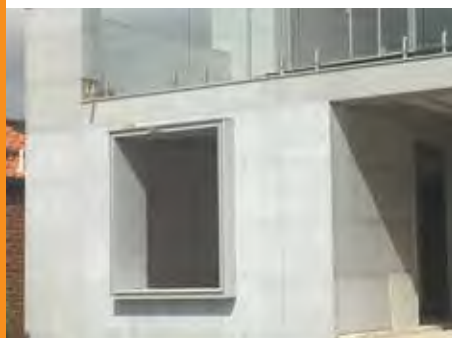


INEX>RENDERBOARD™

A great innovation from UBIQ that delivers a lightweight render substrate board that is suitable for multiple render coating applications. 16mm thick **INEX>RENDERBOARD** sheets are tongue and grooved to lock together and resist any render cracking over time. They are lightweight at about 33kg each, 2700mm long, 600mm high and can be off stud jointed.

Again, **INEX>RENDERBOARD** comes with a fire rating of FRL 60/60/60 and a bushfire attack level BAL-FZ – and both of these ratings WITHOUT the need for any other fire rated materials.

Contact UBIQ or visit www.ubiq.com.au for details of fire rated systems.



INEX>WEATHERBOARD™

Available in 180mm (150mm coverage) or 204mm (172mm coverage)

INEX>WEATHERBOARD's 16mm thickness provides a deep shadow below each board. Suitable for multiple paint and timber stain (rough sawn finish only) applications. Each board is 3 metres long with tongue and grooved ends for off stud jointing. Critically, **INEX>WEATHERBOARD** comes with a fire rating of FRL 60/60/60 and a bushfire attack level BAL-FZ – and both of these ratings WITHOUT the need for any other fire rated materials.

Contact UBIQ or visit www.ubiq.com.au for details of fire rated systems.



PRODUCT ATTRIBUTES

INEX>FLOOR is a revolutionary, low carbon, high strength yet lighter weight for ease of handling cement based flooring sheet suitable for both interior and exterior flooring applications.

INEX>FLOOR has a tongue and groove joint down each long side for a flush tight fit.

Suitable as a substrate for most finishes such as tiles, vinyl, carpet or timber.

For approved waterproofing and coating systems, refer to the COATINGS menu at www.ubiq.com.au.

INEX>FLOOR (Polish grade) available on request.



PRODUCT	LENGTH (mm)	WIDTH (mm)	THICKNESS (mm)	Kg/m ²	Kg/Sheet
INEX>FLOOR 16	2700	600	16	20.7	34
INEX>FLOOR 16	1800	600	16	20.7	22
INEX>FLOOR 19	2700	600	19	24.6	40
INEX>FLOOR 19	1800	600	19	24.6	27

WEIGHT

At approx. 40kg (19mm) or 34kg (16mm) per sheet the **INEX>FLOOR** sheets are lightweight and easy to handle on site.

HIGH PERFORMANCE

INEX>FLOOR can be cut and worked just like comparable fibre cement sheets, but offers improved bending strength characteristics and finish quality. **INEX>FLOOR** can span over joists up to 600mm centres.

NON-COMBUSTIBILITY

INEX>FLOOR is non-combustible and can be used in conjunction with floor systems to achieve up to BAL-FZ bushfire compliance, subject to designer's detailing.

ACOUSTIC

INEX>FLOOR's acoustic qualities offer enhanced impact sound damping when used by itself or used as a substrate for surfaces such as timber or tile.

MATERIAL

INEX>FLOOR is an advanced high strength, low carbon fibre reinforced Engineered Cementitious Composite (ECC) product, containing 60% of post industrial recycled materials. It does not contain asbestos. It is toxin free and is 100% recyclable.

VALUE

INEX>FLOOR is priced for value for the construction industry and competes strongly against comparable products. For pricing, refer to UBIQ's website for your nearest stockist.

Note: Due to the cementitious nature of **INEX>BOARDS** some superficial pin-holing may occur.

The **smooth side** of **INEX>FLOOR** is characterised as a **Class 2** concrete finish.

PROJECTS

**Bungan Beach House**

INEX>FLOOR was chosen for this 7.5m cantilevered balcony. The balcony required a lightweight but high strength floor substrate to provide cross bracing and stiffness which was achieved with **INEX>FLOOR** 16mm. This balcony also achieved BAL-FZ.

**Randwick Racecourse**

INEX>FLOOR was specified for the landmark redevelopment of the Royal Randwick Racecourse due to its high performance properties and ease of installation. Carpet was the chosen covering.

**Pilbara Rest Stops**

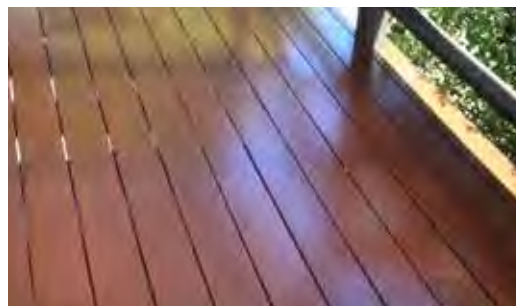
INEX>FLOOR was used for the furniture and roof structure in multiple roadside rest stops in Western Australia.

PRODUCT ATTRIBUTES

INEX>DECKING is a revolutionary, low carbon, high strength, yet lightweight cement based board suitable for all decking applications, where the required Live Load is not greater than 1.8 kN.

INEX>DECKING has pencil round edges in long direction.

The textured side of **INEX>DECKING** provides a superb surface for multiple coating system applications.



Also available as a screening material.

PRODUCT	LENGTH (mm)	WIDTH (mm)	THICKNESS (mm)	Kg/m ²	Kg/Length
INEX>DECKING	2700	140	19	24.6	9

WEIGHT

At approx. 9kg per 2700mm length **INEX>DECKING** is relatively lightweight and easy to handle on site.

HIGH PERFORMANCE

INEX>DECKING can be cut and worked just like comparable fibre cement sheets, but offers improved bending strength characteristics and finish quality. **INEX>DECKING** spans over joists at maximum 450mm centres.*

*When installing, **CUT LENGTH** of **INEX>DECKING** MUST NOT BE LESS THAN 900mm. **INEX>DECKING** board must span over **MINIMUM 3 JOISTS**.

BAL-FZ & NON-COMBUSTIBILITY

INEX>DECKING is non-combustible and is approved for all Bushfire Attack Levels including BAL-FZ** construction in accordance with AS3959-2009.

**BAL-FZ (Flame Zone) is the highest Bushfire Attack Level where there is an extremely high risk of ember attack and burning debris ignited by windborne embers, and a likelihood of exposure to an extreme level of radiant heat and direct exposure to flames from the fire front. Details of BAL-40 and BAL-FZ systems are available on request, or are downloadable at www.ubiq.com.au

MATERIAL

INEX>DECKING is an advanced high strength, low carbon fibre reinforced Engineered Cementitious Composite (ECC) product, containing 60% of post industrial recycled materials. **INEX>DECKING** is 100% recyclable.

LOW CARBON

INEX>DECKING is a low carbon product containing about 40% of the embodied energy of equivalent portland cement derived products.

SUPERIOR FINISH

UBIQ's unique textured surface allows for complete flexibility of finishes; from an authentic natural timber appearance to a multitude of other staining and painting options. Refer to the COATINGS menu on UBIQ's website for information regarding coating finishes.

WATER RESISTANCE

INEX>DECKING is water resistant.

ASBESTOS AND TOXIN FREE

INEX>DECKING does not contain any toxins and is asbestos free.

MOULD & TERMITE RESISTANCE

INEX>DECKING is resistant to mould and termite attack.

DURABILITY & VALUE

INEX>DECKING is long-term durable and represents a real alternative to natural timber without its ongoing maintenance issues. **INEX>DECKING** is an affordable substitute to hardwood and / or other decking composites. For pricing, refer to UBIQ's website for your nearest stockist.

Note: Due to the cementitious nature of **INEX>BOARDS** some superficial pin-holing may occur.

TECHNICAL INFORMATION

PRODUCT



WEIGHT

At approx. 9kg per 2700mm length **INEX>DECKING** is relatively lightweight and easy to handle on site.

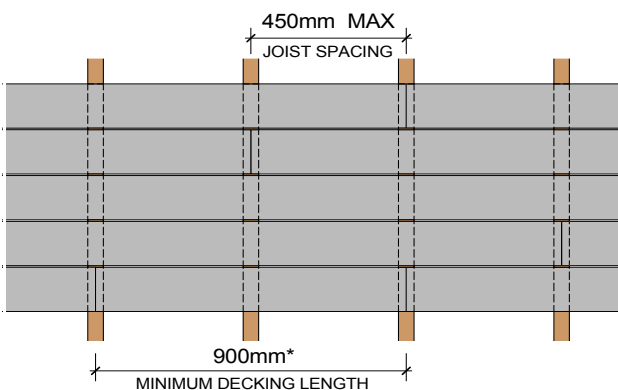
LOADING

INEX>DECKING is suitable for all decking applications, where the required Live Load is not greater than 1.8 kN.

STORAGE

INEX>DECKING should be stored dry, flat and with all edges protected from damage. We recommend storage undercover and raised from the ground. Do not store **INEX>DECKING** vertically.

SUPPORT



FRAMING

INEX>DECKING can be fixed to timber or steel joists with spacing at maximum 450mm centres.

Timber framing must be in accordance with AS 1684 – ‘Residential timber-framed construction’.

Steel framing must be in accordance with AS 3623 – ‘Domestic metal framing’.

For uncovered decks, allow a 2-3mm fall per metre of deck to aid rainwater runoff as required. Fall must run in the direction away from adjoining structure.

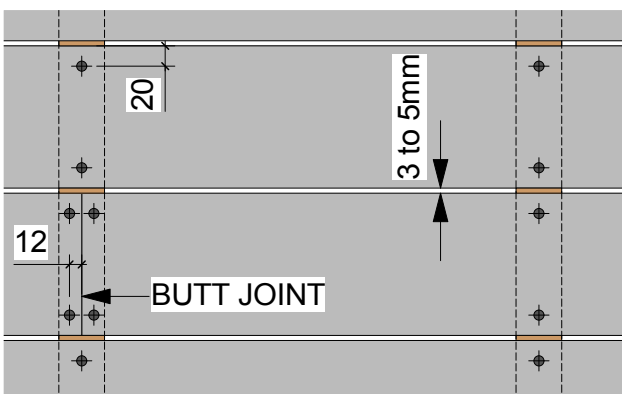
Recommended Spacing between **INEX>DECKING** boards: 3mm- 5mm**.

*When installing, **CUT LENGTH** of **INEX>DECKING** MUST NOT BE LESS THAN 900mm. **INEX>DECKING** board must span over **MINIMUM 3 JOISTS**.

**For Bushfire Prone Areas BAL-40 and BAL-FZ decking must not be spaced.

Refer to UBIQ’s website for **INEX>DECKING** BAL-40 and BAL-FZ installation.

FIXING



ASSEMBLY

INEX>DECKING must be installed with rough side up.

Butt ends of **INEX>DECKING** must be supported by a joist.

FIXINGS:

Ensure all fixings are located:

- 20mm from all side edges
- 12mm from butt joints
- 2 screws per joist

FIXINGS – TIMBER JOISTS – Class 3 Galvanised Fixings or higher.*

Screws: 10g x 50mm self embedding countersunk head screws.

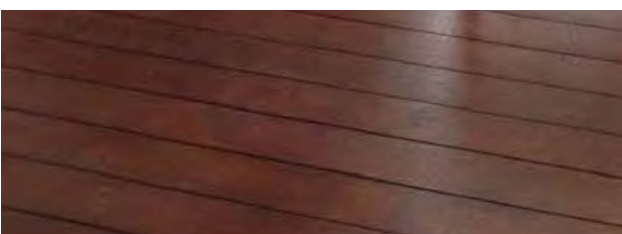
FIXINGS – STEEL JOISTS – Class 3 Galvanised Fixings or higher.*

Screws: 10g x 40mm self-drilling, self-embedding, stainless steel countersunk screws.

*Class 4 or Stainless Steel screws for sea spray zone in accordance with AS 3566.

When fixing **INEX>DECKING** to the joists, it is good practice to apply a 6mm diameter bead of **INEX>BOND** to bond **INEX>DECKING** to the frame even when mechanical fixings are used.

APPLICATION



FINISHES

If a real natural timber appearance is desired then **INEX>DECKING** offers the perfect solution, and comes without the long term maintenance issues of timber itself. UBIQ’s unique textured surface on **INEX>DECKING** allows for complete flexibility of finishes to be achieved; from an authentic natural timber appearance to a multitude of other staining or painting options.

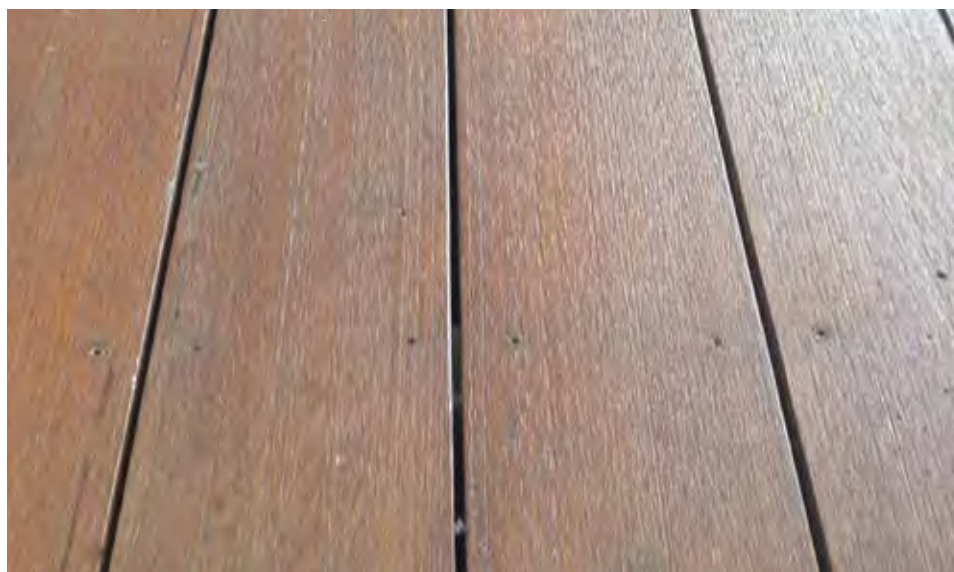
For further details of coating options refer to the COATINGS menu at: www.ubiq.com.au.

PROJECTS



Epping Granny Flat

INEX>DECKING was chosen for its low maintenance and high durability. As **INEX>DECKING** is an engineered cementitious composite (ECC), no cupping, warping or splintering occurs.



'Rough Sawn' Profile

A simple finish with 2 coats of water based wood stain, the rough sawn profile of **INEX>DECKING** delivers a real timber deck like appearance without the cost and ongoing maintenance issues of natural timber.



Clovelly Rear Extension

INEX>DECKING was used as slats for this low maintenance privacy screen. Alternatively, **INEX>DECKING** can be used for fencing, gates, balustrading & etc. It is non-combustible and suitable for use in all bushfire prone zones. The example at left uses the Screen Up system available at Bunnings Warehouse.

SCREEN UP
Slat Screening System

PRODUCT ATTRIBUTES

Save up to 80% of Decking Installation Time!

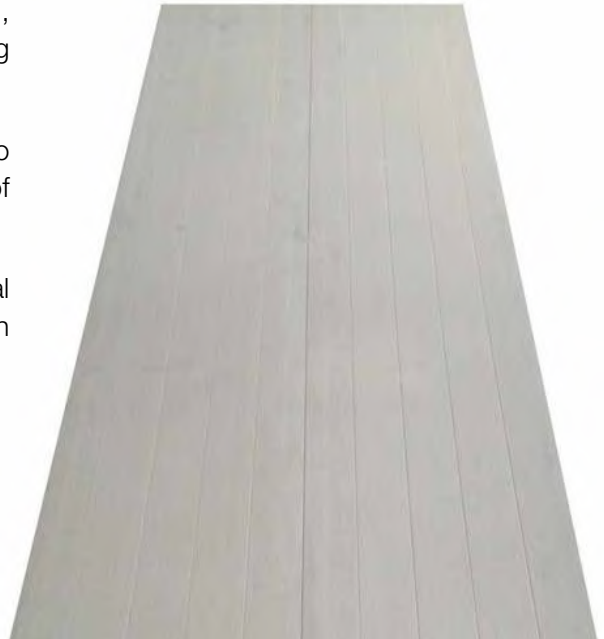
INEX>MAXIDECK is a revolutionary, low carbon, high strength, yet lightweight cement based Tongue and Groove (T&G) decking panel.

INEX>MAXIDECK comes with grooves routed into its surface to deliver an authentic decking board appearance without the fuss of having to lay individual decking boards.

Each **INEX>MAXIDECK** represents 5 x 120mm wide individual decking boards, thereby cutting the installation time to less than 20% of what it would be if individual boards were used.

The textured side of **INEX>MAXIDECK** provides a superb surface for multiple coating system applications.

INEX>MAXIDECK is suitable for all decking applications, where the required Live Load is not greater than 2.7 kN.



PRODUCT	LENGTH (mm)	WIDTH (mm)	THICKNESS (mm)	Kg/m ²	Kg/Sheet
INEX>MAXIDECK	2700	600	16	20.7	34

WEIGHT

At approx. 34kg per 2700mm length, the 600mm wide **INEX>MAXIDECK** panel is relatively lightweight and easy to handle on site.

HIGH PERFORMANCE

INEX>MAXIDECK can be cut and worked just like comparable fibre cement sheets, but offers improved bending strength characteristics and finish quality. **INEX>MAXIDECK** spans over joists at maximum 450mm centres.

BAL-FZ & NON-COMBUSTIBILITY

INEX>MAXIDECK is non-combustible and is approved for all Bushfire Attack Levels including BAL-FZ*.

*As there is no spacing between individual decking boards, **INEX>MAXIDECK** is therefore by default BAL-FZ compliant in accordance with AS3959-2009.

MATERIAL

INEX>MAXIDECK is an advanced high strength, low carbon fibre reinforced Engineered Cementitious Composite (ECC) product, containing 60% of post industrial recycled materials. It is toxin free and is 100% recyclable.

SUPERIOR FINISH

UBIQ's unique textured surface allows for complete flexibility of finishes; from an authentic natural timber appearance to a multitude of other staining and painting options. Refer to the COATINGS menu on UBIQ's website for information regarding coating finishes.

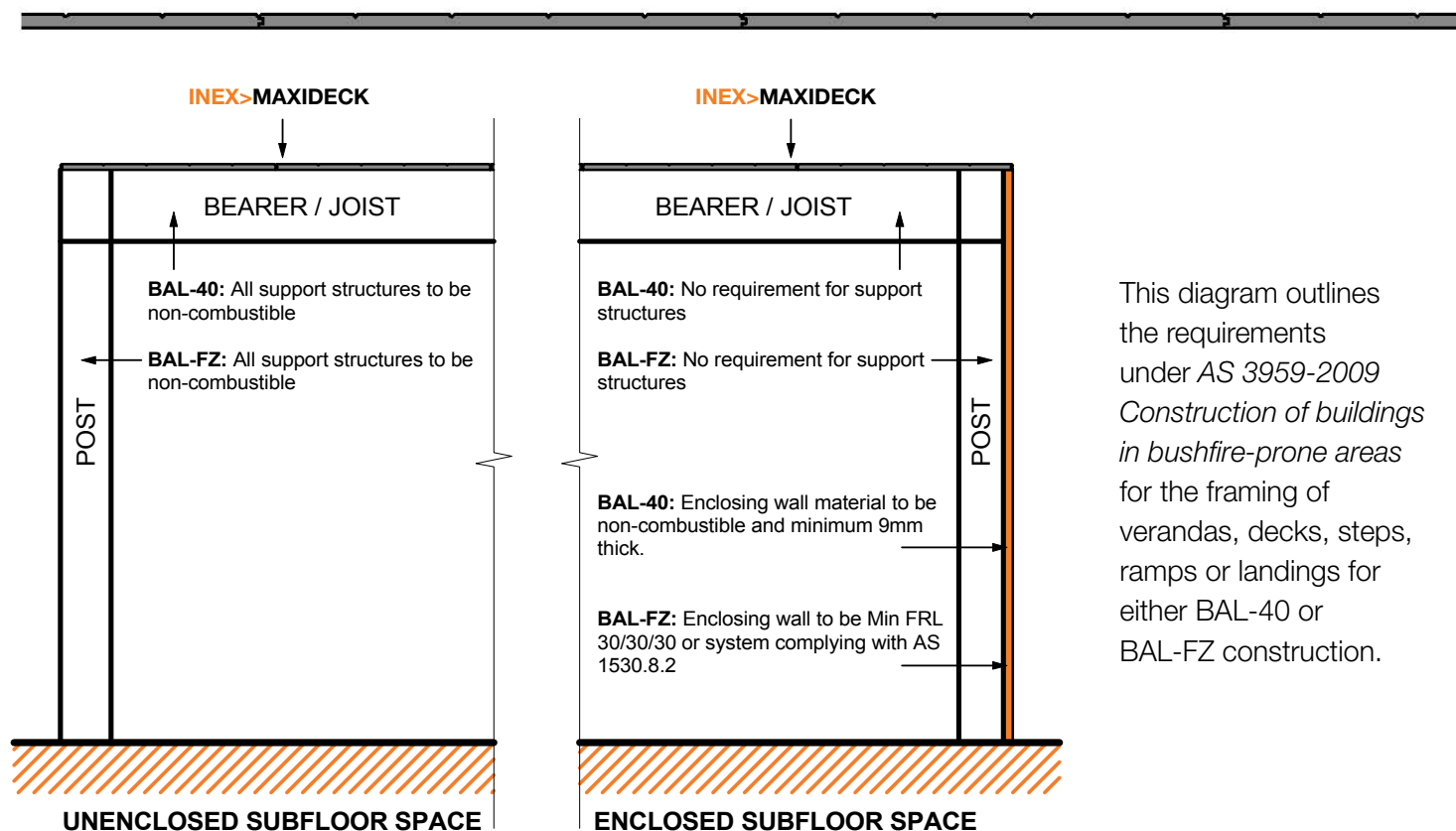
DURABILITY & VALUE

INEX>MAXIDECK is long-term durable and represents a real alternative to natural timber without its ongoing maintenance issues. **INEX>MAXIDECK** is an affordable substitute to hardwood and / or other decking composites. Each **INEX>MAXIDECK** represents 5 x 120mm wide individual decking boards, thereby cutting the installation time to 20% of what it would be if individual boards were used. For pricing, refer to UBIQ's website for your nearest stockist.

Note: Due to the cementitious nature of **INEX>BOARDS** some superficial pin-holing may occur.

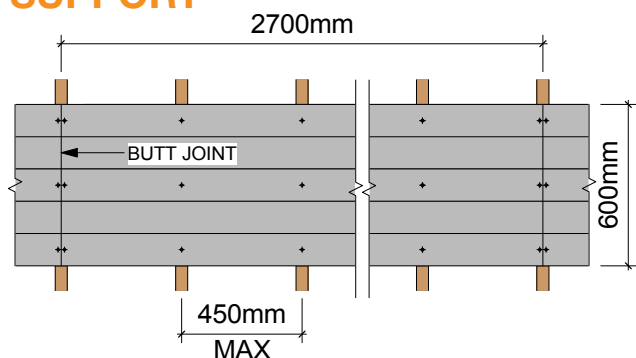
BAL-40 & BAL-FZ TECHNICAL INFORMATION

INEX>MAXIDECK BY DEFAULT IS BAL-40 & BAL-FZ COMPLIANT.



This diagram outlines the requirements under AS 3959-2009 *Construction of buildings in bushfire-prone areas* for the framing of verandas, decks, steps, ramps or landings for either BAL-40 or BAL-FZ construction.

SUPPORT



FRAMING

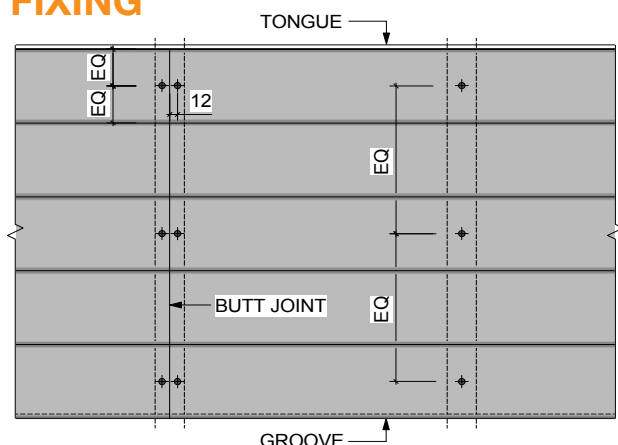
In BAL-40 or BAL-FZ construction **INEX>MAXIDECK** can be fixed to either timber or steel joists; depending on whether the deck or verandah subfloor space is enclosed – SEE DIAGRAM ABOVE.

Timber framing must be in accordance with AS 1684 – ‘Residential timber-framed construction’.

Steel framing must be in accordance with AS 3623 – ‘Domestic metal framing’.

Since the decking boards are **NOT SPACED** UBIQ recommends that the framing structure allows for a slight fall to allow for run off. This fall should be in the direction of the boards.

FIXING



ASSEMBLY

INEX>MAXIDECK must be installed with rough side up.

Butt ends of **INEX>MAXIDECK** must be supported by a joist.

INEX>MAXIDECK can be fitted to a square or staggered layout.

FIXINGS:

Ensure all fixings are located:

- on all joists
- centred to each outside board & centred to each middle board
- 12mm from butt joints

FIXINGS – TIMBER JOISTS – Class 3 Galvanised Fixings or higher*

Screws: 10g x 50mm self embedding countersunk head screws.

FIXINGS – STEEL JOISTS – Class 3 Galvanised Fixings or higher*

Screws: 10g x 40mm self-drilling, self-embedding, stainless steel countersunk screws.

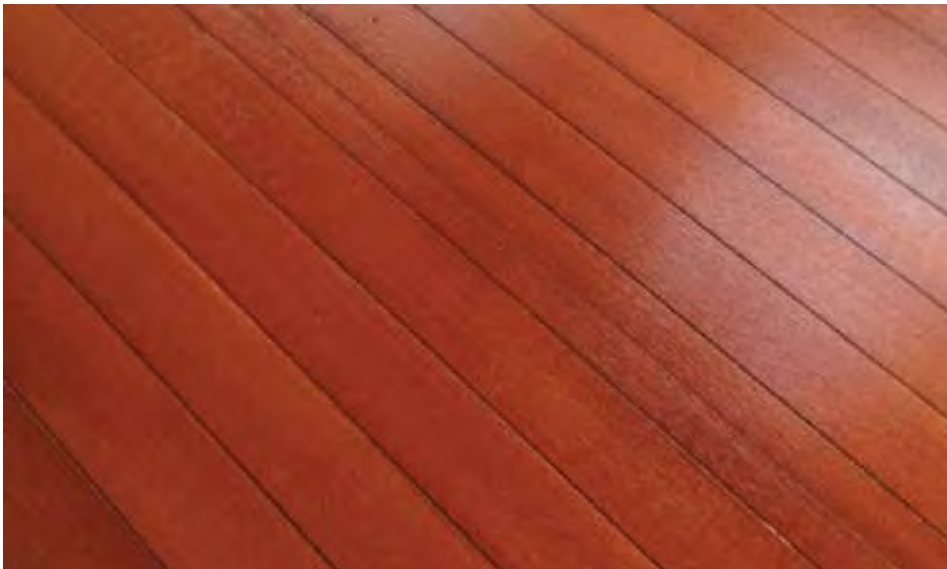
*Class 4 or Stainless Steel screws for sea spray zone in accordance with AS 3566.

When fixing **INEX>MAXIDECK** to the joists, it is good practice to apply a 6mm diameter bead of **INEX>BOND** to bond **INEX>MAXIDECK** to the frame even when mechanical fixings are used.

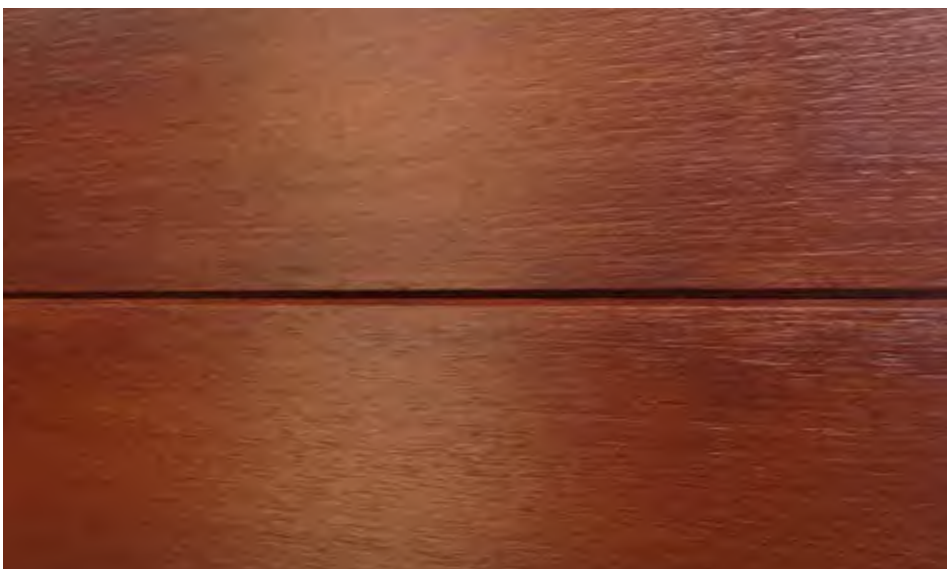
PROJECTS



Whitsunday Moorings B&B
INEX>MAXIDECK was chosen for its timber deck appearance, but without the cost and ongoing maintenance issues of natural timber in this tropical environment.



Save Installation Time
Given the size of **INEX>MAXIDECK** sheets (2700 x 600), this deck was installed in a fraction of time compared to individual decking board installation.



Complete Flexibility of Finishes
INEX>MAXIDECK was finished with 2 coats of water based wood stain. The result is this stunning timber like deck appearance.

PRODUCT ATTRIBUTES

INEX>RENDERBOARD is a revolutionary, low carbon, high strength, yet lightweight cement based interior and exterior wall cladding suitable for both residential and commercial applications.

INEX>RENDERBOARD has a tongue and groove joint down each long side for a flush tight fit.

The rough side of **INEX>RENDERBOARD** provides a superb textured finish for multiple render system applications.



PRODUCT	LENGTH (mm)	WIDTH (mm)	THICKNESS (mm)	Kg/m ²	Kg/Sheet
INEX>RENDERBOARD	2700	600	16	20.5	33

WEIGHT

At approx. 33kg (16mm) per sheet **INEX>RENDERBOARD** is lightweight and easy to handle on site.

HIGH PERFORMANCE

INEX>RENDERBOARD can be cut and worked just like comparable fibre cement sheets, but offers improved bending strength characteristics and finish quality. **INEX>RENDERBOARD** can be fixed to timber or steel studs with spacing at maximum 600mm centres.

FIRE RATING

INEX>RENDERBOARD is non-combustible. It is approved for bushfire BAL-FZ* construction and is certified to Fire Resistance Level FRL 60/60/60. Contact UBIQ or visit www.ubiq.com.au for details on fire-rated systems.

*BAL-FZ (Flame Zone) is the highest Bushfire Attack Level where there is an extremely high risk of ember attack and burning debris ignited by windborne embers, and a likelihood of exposure to an extreme level of radiant heat and direct exposure to flames from the fire front. Details of BAL-FZ wall systems are available on request.

ACOUSTIC

INEX>RENDERBOARD's acoustic qualities offer enhanced impact sound damping when used by itself or used in wall systems.

MATERIAL

INEX>RENDERBOARD is an advanced high strength, low carbon fibre reinforced Engineered Cementitious Composite (ECC) product, containing 60% of post industrial recycled materials. It is toxin free and is 100% recyclable.

VALUE

INEX>RENDERBOARD is priced for value for the construction industry and competes strongly against comparable products. For pricing, refer to UBIQ's website for your nearest stockist.

Note: Due to the cementitious nature of **INEX>BOARDS** some superficial pin-holing may occur.

The **smooth side** of **INEX>RENDERBOARD** is characterised as a **Class 2** concrete finish.

PROJECTS



Bungan Beach Home

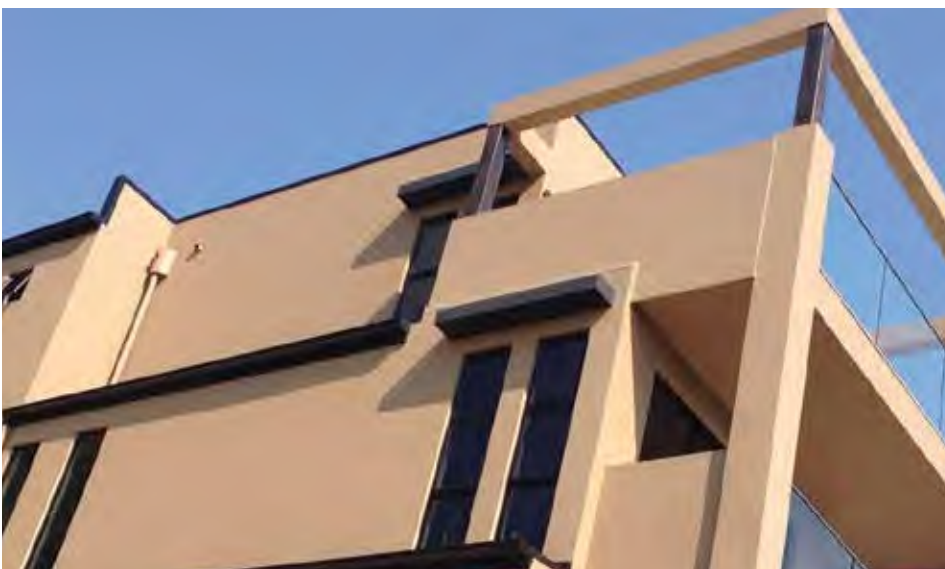
The breathtaking front elevation of this architecturally designed masterpiece in Bungan Beach was a result of utilising both **INEX>RENDERBOARD** and **INEX>FLOOR**.



Bronte Development

INEX>RENDERBOARD delivers a flawless rendered surface. With its tongue and groove joints it is designed to resist cracking due to differential substrate movement over time.

Single residence in Bronte designed by Bureau SRH Architects.



Gold Coast Beach Residence

BAL-FZ fire rating, seamless façades and beautifully executed balconies were the outcomes of the use of **INEX>FLOOR** and **INEX>RENDERBOARD** throughout this waterfront residence.

PRODUCT ATTRIBUTES

INEX>WEATHERBOARD is a revolutionary, low carbon, high strength, yet lightweight cement based exterior wall cladding suitable for both residential and commercial applications.

The long edges of **INEX>WEATHERBOARD** are precisely profiled to allow for easy installation and accurate overlaps, thus resulting in stunningly sharp horizontal lines that appeal to many designers.

INEX>WEATHERBOARD has a tongue and groove joint down each short end for a flush tight fit and off stud jointing.

The **SMOOTH FINISH*** of **INEX>WEATHERBOARD** is an ideal surface for multiple paint applications. For coating systems refer to the COATINGS menu on the UBIQ website.

The **ROUGH SAWN FINISH*** of **INEX>WEATHERBOARD** provides a superb linear textured surface for designers wishing to attain a timber-grain weatherboard look.

*Smooth and Rough Sawn Finishes available.



BAL-FZ
FRL 60/60/60

PRODUCT	LENGTH (mm)	WIDTH (mm)	COVERAGE (mm)	THICKNESS (mm)	Kg/m ²	Kg/Length
INEX>WEATHERBOARD 180	3000	180	150	16	20.7	11
INEX>WEATHERBOARD 204	3000	204	172	16	20.7	12

WEIGHT

At approx. 12kg (16mm) per length **INEX>WEATHERBOARD** is lightweight and easy to handle on site.

HIGH PERFORMANCE

INEX>WEATHERBOARD can be cut and worked just like other comparable fibre cement weatherboard, but offers improved bending strength characteristics and finish quality. **INEX>WEATHERBOARD** can be fixed to timber or steel studs with spacing at maximum 600mm centres.

FIRE RATING

INEX>WEATHERBOARD is non-combustible. It is approved for bushfire BAL-FZ** construction and is certified to Fire Resistance Level FRL 60/60/60. Contact UBIQ or visit www.ubiq.com.au for details on fire-rated systems.

**BAL-FZ (Flame Zone) is the highest Bushfire Attack Level where there is an extremely high risk of ember attack and burning debris ignited by windborne embers, and a likelihood of exposure to an extreme level of radiant heat and direct exposure to flames from the fire front. Details of BAL-FZ wall systems are available on request.

ACOUSTIC

INEX>WEATHERBOARD's acoustic qualities offer enhanced impact sound damping when used by itself or used in wall systems.

MATERIAL

INEX>WEATHERBOARD is an advanced high strength, low carbon fibre reinforced Engineered Cementitious Composite (ECC) product, containing 60% of post industrial recycled materials. It is toxin free and is 100% recyclable.

VALUE

INEX>WEATHERBOARD is priced for value for the construction industry and competes strongly against comparable products. For pricing, refer to UBIQ's website for your nearest stockist.

Note: Due to the cementitious nature of **INEX>BOARDS** some superficial pin-holing may occur.

The **smooth side** of **INEX>WEATHERBOARD** is characterised as a **Class 2** concrete finish.

PROJECTS



Byron Bay Home

INEX>WEATHERBOARD was utilised as the main façade feature of this residence, resulting in stunningly sharp horizontal lines.



Gladesville Home

The reverse side rebated profile of **INEX>WEATHERBOARD** allows each next board to be set on top of the previous one. No levelling is necessary and installation can be done by a single builder.



Willoughby Home

Contrasting with face brickwork, the use of **INEX>WEATHERBOARD** plays a key role in the composition of the front entry of this Willoughby residence.

PRODUCT ATTRIBUTES

INEX>BOND – MS Polymer elastic adhesive/sealant with a broad adhesion spectrum and high durability

Product Description

INEX>BOND is a high-quality, exterior-grade, multi-purpose, non-sag, paintable, one-part adhesive/sealant that cures on exposure to atmospheric moisture to form a durable elastomer. For use to seal joints that must accommodate movement,* in any structure, etc., in conjunction with recommended mechanical fixings (nails and screws). **INEX>BOND** will bond to many materials including most timbers, metals, metal primers and paint coatings (one and two-part systems), ceramics and many plastics. **INEX>BOND** can provide an elastic water, gas and dust proof seal to 'moving' joints in many structures.

Typical Applications

- The primary application is to seal the joints between **INEX>FLOOR** boards when used in wet areas such as bathrooms, toilets, laundries, kitchens, balconies and decks.
- To seal control joints in ceramic tiled floors in 'L' shaped rooms, etc.
- In light foot traffic areas it can be used to bond **INEX>FLOOR** boards to timber or metal joists.
- Sealing joints in building facades, around door and window frames and other expansion joints.

Product Benefits

- Adheres to many surfaces without primers*
- Bonds well to old well-cleaned **INEX>BOND** adhesive/sealant
- Permanently elastic
- Odour free
- Solvent free
- Non-corrosive
- Non-sagging in a 40mm wide joint
- Superior weatherability to polyurethane sealants and adhesives
- Resistant to: water, dilute inorganic acids and alkalis, aliphatic solvents, oils and greases*
- Many paint systems can be applied within 10 minutes to 4 hours of application or sooner in some cases.*

Available in 290ml Cartridges and 600ml Sausages

* Pre-testing advised.



MARKET SECTORS

CLIENT

PROJECT

CONTRACTOR

RECREATIONAL



Royal Randwick Racecourse Upgrade NSW
Entire area of adaptive reuse of existing stadium.
Tiered platforms for new executive boxes and bar areas
2,000m²



PUBLIC INFRASTRUCTURE / (RAIL TRANSPORT)

PRIVATE HOME OWNER



Bungan Beach House NSW
INEX>FLOOR was chosen for this 7.5m cantilevered balcony.
A lightweight but high strength floor substrate to provide cross bracing and stiffness which was achieved with **INEX>FLOOR** 16mm. This balcony also achieved BAL-FZ.



INSTITUTIONAL EDUCATION



Wesley College Expansion, University of Sydney NSW
2 layers of **INEX>FLOOR** over entire area of 44 new student accommodation rooms
1,500m²



ECCLESIASTICAL



St Mary's Catholic Church, Concord NSW
INEX>FLOOR for entire new floor to church nave, aisles and chapels
1,500m²



COMMERCIAL



ILVE Appliances Showroom, 48 Moore St, Leichhardt
INEX>FLOOR provided an affordable alternative to a polished concrete-style finish
150m²



RESIDENTIAL

PRIVATE HOME OWNER



Bungan Beach House NSW
INEX>FLOOR
INEX>WALLBOARD
1,000m²



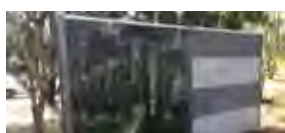
The Captain's House, Byron Bay NSW
INEX>WEATHERBOARD External
INEX>WALLBOARD all internal walls and ceilings.
1,000m²



Byron Bay Tree Top Holiday House NSW
INEX>FLOOR with timber stain for Bushfire Zones where timber is not possible. All surfaces, internal / external
850m²



PUBLIC INFRASTRUCTURE / (ACOUSTIC FENCING - ROAD & RAIL)



Traffic corridor noise abatement fencing
Roadside noise abatement fence panel
Multiple Kilometers



BUILD A FIRE-RATED HOME* WITH **INEX>**BOARDS™



INEX>FLOOR™

BAL-FZ

INEX>DECKING™

BAL-FZ

INEX>MAXIDECK™

BAL-FZ

INEX>RENDERBOARD™

BAL-FZ – 60/60/60 - NO FIRE RATED PLASTERBOARD REQUIRED

INEX>WEATHERBOARD™

BAL-FZ – 60/60/60 – NO FIRE RATED PLASTERBOARD REQUIRED



*Refer to UBIQ website
for further information



NOTES

[illegible]

Thank you for considering **INEX>BOARDS™**



UBIQ

www.ubiq.com.au



Proudly Distributed by



Innovative Timber Ideas

ITI (Aust)

itiaustralia.com.au

Brands to build with[®]

Sydney

(02) 8805 5000

Townsville

(07) 4724 5509

Newcastle

(02) 4953 7666

Melbourne

(03) 9392 8400

John Cook & Sons

(02) 9833 0355

Adelaide

(08) 8347 7011

Brisbane

(07) 3436 8400

Perth

(08) 9331 3711



The mark of responsible forestry

SGS-000-000000

Revised May 2015